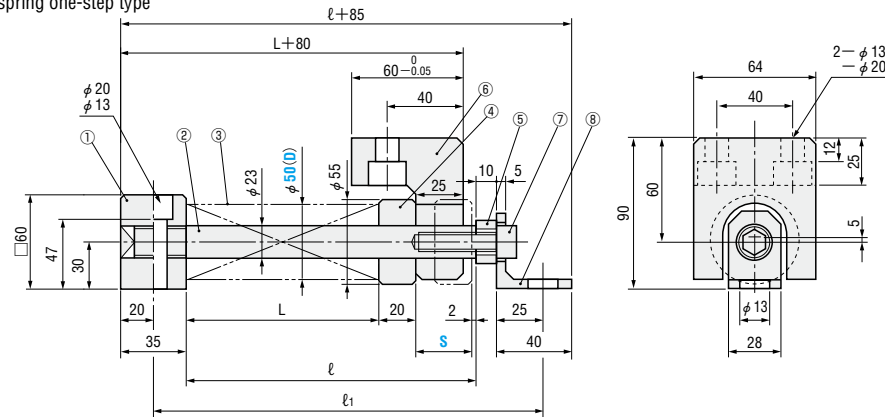


RETURNING UNITS FOR CAM SLIDER

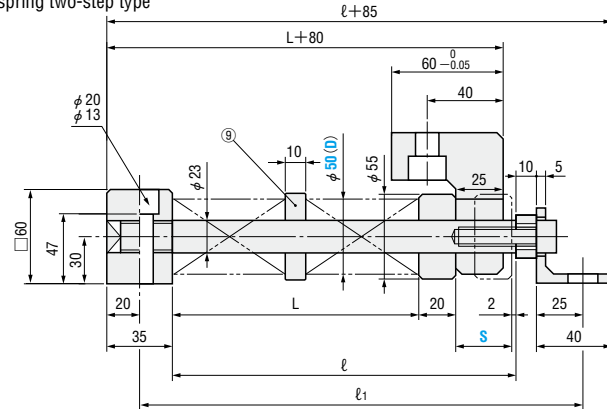


CUSSL 50
CUSSM 50

● Coil spring one-step type



● Coil spring two-step type



ⓘ The view above is for Max.load.

■ Table of Components

No.	Name	Quantity	Material, Remarks	No.	Name	Quantity	Material, Remarks
①	Fixed plate	1	SS400	⑥	Slide angle	1	SS400
②	Guide pin	1	S45C 55HRC~	⑦	Hexagon socket head cap screw	1	SCM435 M12×40
③	Coil spring	1 (2)	Refer to the specifications table.	⑧	Support angle	1	SS400
④	Separate disk	1	FC250	⑨	Washer	1	FC250
⑤	Pressure disk	1	SS400				

Coil spring		Load N (kgf)		L		ℓ	ℓ ₁	Catalog No.	(D)	S
Catalog No.	Number of steps	Preload	Max.load	At preload	At Max.load					
SWL 50-100	1	994 (101.4)	2700 (275.3)	88	68	110	160	CUSSL	50	20
SWL 50-125	1	993 (101.3)		110	85	132	182			25
SWL 50-150	1	994 (101.4)		132	102	154	204			30
SWL 50-150	1	718 (73.2)		137	102	159	209			35
SWL 50-175	1	757 (77.2)		159	119	181	231			40
SWL 50-200	1	787 (80.2)		181	136	203	253			45
SWL 50-250	1	993 (101.3)		220	170	242	292			50
SWL 50-250	1	828 (84.4)		225	170	247	297			55
SWL 50-300	1	994 (101.4)		264	204	286	336			60
SWL 50-300	1	856 (87.2)		269	204	291	341			65
SWL 50-300	1	718 (73.2)		274	204	296	346			70
SWL 50-175	2	875 (89.2)		323	248	345	395			75
SWL 50-200	2	994 (101.4)		362	282	384	434			80
SWL 50-200	2	890 (90.8)		367	282	389	439			85
SWL 50-200	2	787 (80.2)		372	282	394	444			90
SWL 50-200	2	683 (69.7)		377	282	399	449			95
SWL 50-250	2	993 (101.3)		450	350	472	522			100
SWL 50-250	2	910 (92.8)		455	350	477	527			105
SWL 50-250	2	828 (84.4)		460	350	482	532			110
SWL 50-250	2	745 (75.9)		465	350	487	537			115
SWL 50-300	2	994 (101.4)	538	418	560	610	120			
SWL 50-300	2	925 (94.3)	543	418	565	615	125			
SWL 50-300	2	856 (87.2)	548	418	570	620	130			
SWL 50-300	2	787 (80.2)	553	418	575	625	135			
SWL 50-300	2	718 (73.2)	558	418	580	630	140			
SWL 50-300	2	649 (66.1)	563	418	585	635	145			
SWL 50-300	2	580 (59.1)	568	418	590	640	150			
SWM50-125	1	1476 (150.5)	3920 (399.7)	113	93	135	185	CUSSM	50	20
SWM50-150	1	1428 (145.6)		136	111	158	208			25
SWM50-200	1	1609 (164.0)		179	149	201	251			30
SWM50-225	1	1498 (152.8)		203	168	225	275			35
SWM50-250	1	1471 (150.0)		226	186	248	298			40
SWM50-300	1	1581 (161.2)		269	224	291	341			45
SWM50-350	1	1708 (174.2)		311	261	333	383			50
SWM50-350	1	1489 (151.9)		316	261	338	388			55
SWM50-200	2	1992 (203.1)		358	298	380	430			60
SWM50-200	2	1800 (183.6)		363	298	385	435			65
SWM50-225	2	1907 (194.4)		404	334	426	476			70
SWM50-250	2	1931 (196.9)		447	372	469	519			75
SWM50-250	2	1778 (181.3)		452	372	474	524			80

Order **Catalog No.** **(D)** - **S**
 CUSSL 50 - 40
 CUSSM 50 - 70

Days to Ship **Quotation**

Price **Quotation**