

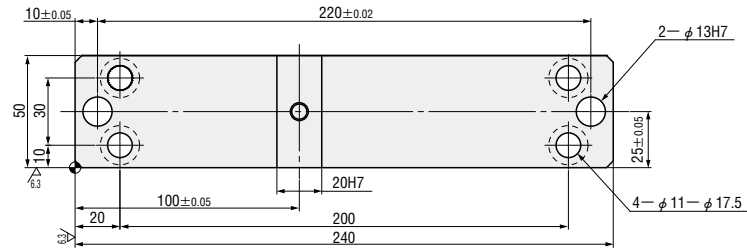
STANDARD FLYING CAM UNITS FOR PIERCE

— MGFV · MEVN —

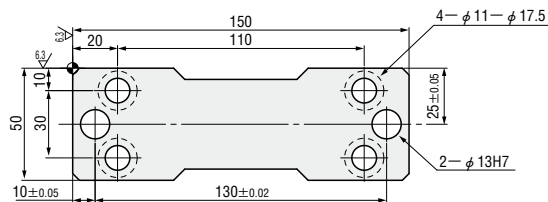
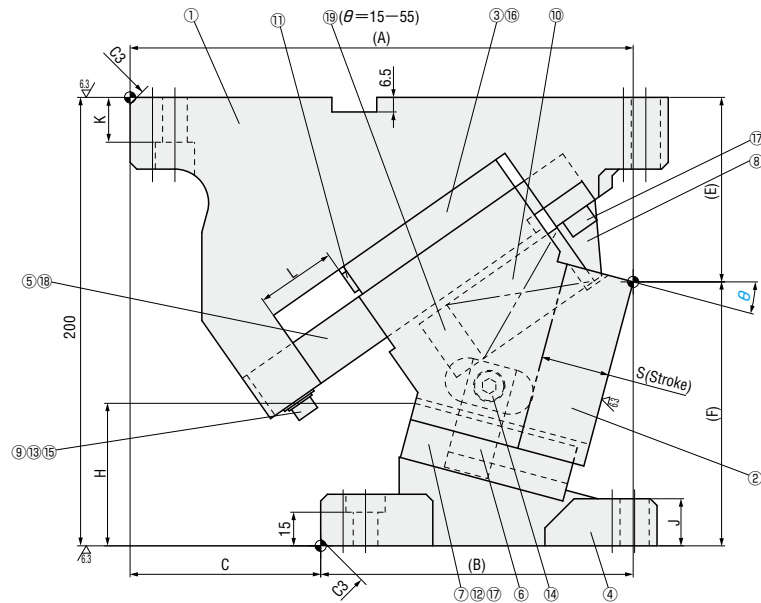
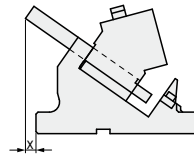
CAM DIAGRAM

P.1173

— With automatic alignment — **MGFV50 ($\theta=00-55$)**
 — Without automatic alignment — **MEVN50 ($\theta=00-55$)**
 (Economy type)



■ Rear removal space



W	θ	A	B	C	E	F	H	J	K	L	V	V ₁	x
50	00	225	118	107	77.5	122.5	45	23	20	47	75	75	0
	05	226.91	126.91	100	78.33	121.67	51.4			43			
	10	223.72	133.72	90	79.93	120.07	57.6			39			
	15	224.36	139.36	85	82.29	117.71	63.6	36					
	20	220.76	150.76	70	85.39	114.61	69.1	33					
	25	215.85	157.85	58	89.22	110.78	74.4	21	30				
	30	213.58	158.58	55	94.73	105.27	78.2						
	35	204.89	169.89	35	96.9	103.1	85.5						
	40	206.72	176.72	30	102.69	97.31	89.4						
	45	202.01	182.01	20	103.06	96.94	98.7						
50	195.73	185.73	10	105.94	94.06	105.5	65						
55	189.83	189.83	0	116.3	83.7	104.8							

Slide Stroke S	Working force KN (tonf)		Spring load N (kgf)			Total weight kg	Catalog No.	W	θ	
	Standard working force	Max. working force	Preload	5mm before bottom dead center	Max. load					
30.2	19.6 (2.0)	39.2 (4.0)	59(6.0)	827(84.3)	980 (99.9)	12.7	— With automatic alignment — MGFV	50	00	
30.5			137(14.0)	843(85.9)		12.3			05	
30.3			216(22.0)	855(87.1)		11.8			10	
30.5			98(10.0)	835(85.2)		11.8			15	
30.4			172(17.5)	848(86.4)		11.5			20	
30.0			163(16.6)	843(86.0)	979 (99.9)	11.3			25	
32.6						854(87.1)			11.1	30
35.4						865(88.2)			10.9	35
38.6						873(89.0)			10.9	40
42.3						884(90.1)			10.6	45
46.7	892(91.0)	10.6				50				
52.1	900(91.8)	10.8				55				

Order **Catalog No.** **MGFV** **W** **50** — **θ** **40**

Days to Ship **Quotation**

Price **Quotation**

Alterations **Catalog No.** **MGFV** **W** **50** — **θ** **40** — **(N12 · K...etc.)** **N12**

Alterations	Code	Spec.
	N12	Change dowel hole diameter $\phi 13H7 \Rightarrow \phi 12H7$
	K	Add locating key (With 1 hexagon socket head cap screws M8×15)
	SC	Move forward mounting surface $1 \leq SC \leq 60$ 1mm increment
	WC	Change the width of mounting surface $W=50 \Rightarrow W=65$

■ Components table P.1179

CAM UNITS & COMPONENTS