

GUIDE COMPONENTS FOR AUTOMOTIVE DIES

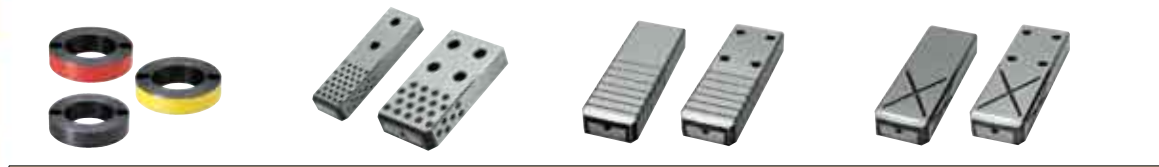
GUIDE COMPONENTS FOR AUTOMOTIVE DIE



Product name	GUIDE POSTS GPM	OIL-FREE GUIDE BUSHINGS GBF GBW	OIL-FREE GUIDE BUSHINGS WITH FLANGES HGBF	GUIDE POSTS GPOB
Catalog No.				
Page	976	977	977	978



LOCKING STOPPERS FOR GUIDE POSTS GPSB	STROKE END BLOCKS GEB DSEB	LOCKING END BLOCKS FOR GUIDE BUSHINGS KEB	BALL GUIDE POST SETS PKHL PKHLU PKH PKH-U
978	979	980	982



DISTANCE GUIDE RINGS HKD	OIL-FREE HEEL GUIDE PLATES OGG OGP OGPZ	OIL-FREE HEEL GUIDE PLATES GWZ GWAZ GWBZ	HEEL GUIDE PLATES WITH OIL GROOVES GW GWA GWB
984	985	985	987



HEEL GUIDE PLATES—OIL-FREE SLIDE PLATE CHANGABLE TYPE—GPRSE GPRSK GPRST	PAD KEEPERS KEPN	—WITH OIL GROOVES—KEPNZ	PAD GUIDE BLOCKS PGWN
988	989	989	990



OIL-FREE GUIDE BLOCKS FOR PADS GBFC GBSC	—LOCATING PLATES—HDPT HDPTT	OIL-FREE GUIDE BLOCKS FOR PADS—CORNER GUIDE TYPE—GBLK	OIL-FREE GUIDE BUSHINGS—FLANGE TYPE—SGBW
991	992	993	994



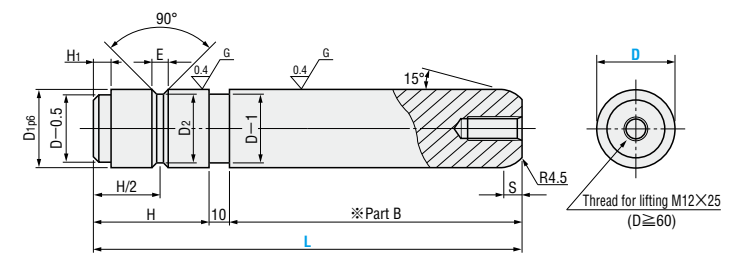
OIL-FREE UNIVERSAL GUIDE BUSHINGS—STRAIGHT TYPE—GGBW	OIL-FREE WASHERS GBWC GBWCN	OIL-FREE UNIVERSAL GUIDE BUSHINGS—STRAIGHT BRONZE TYPE—GGBP	OIL-FREE UNIVERSAL GUIDE BUSHINGS—FLANGE TYPE—GGBF
995	996	997	998

GUIDE POSTS

Guide posts



GPM



※Part B: Induction hardening

☐ S45C
 ☒ 55HRC~ (Induction hardening)

D	D1p6	D2	H	E	S	H1	Catalog No. Type	D	L
25	25	21	30			5	GPM	25	80
									100
									120
									140
									160
30	30	26	40	8	5	GPM	30	100	
								120	
								140	
								160	
								180	
40	40	36	50	8	5	GPM	40	120	
								140	
								160	
								180	
								200	
50	50	45	70	10	10	GPM	50	200	
								250	
								300	
								350	
								400	
60	60	55	90	12	10	GPM	60	250	
								300	
								350	
								400	
								450	
65	65	60	100			GPM	65	250	
								300	
								350	
								400	
								450	
80	80	75	120	12	10	GPM	80	250	
								300	
								350	
								400	
								450	
100	100	95	150	12	10	GPM	100	300	
								350	
								400	
								450	
								500	

Order **Catalog No.** — **L**
 GPM 80 — 300

Days to Ship **Quotation**

Price **Quotation**

Alterations **Catalog No.** — **L(LC)** — **(MC)**
 GPM 40 — LC110 — MC

Alterations	Code	Spec.	
	LC	Post length change	D
		$L_{min} \leq LC < L$	Lmin.
		1mm increment	30
		Can be used for $30 \leq D \leq 50$.	85
	MC	Tap machining T on the fixing side	40
		D	105
		30 ~ 80	25
		100	32

GUIDING COMPONENTS FOR AUTOMOTIVE DIES