

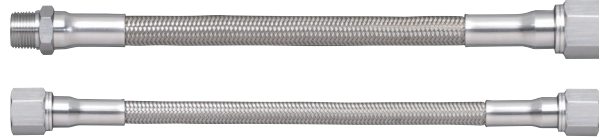
# STAINLESS COOLING HOSES FOR MOLD

## MOLD-COOLING FLEXIBLE HOSES (STAINLESS STEEL)

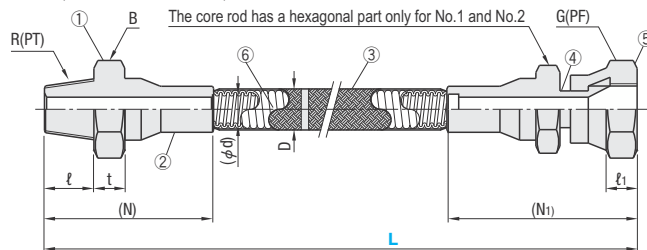
—HEAT RESISTANCE 180°C FLEXIBLE TYPE—

Only SUS—TKMM and SUS—TKMF plugs are compatible to SUS—TKHP and SUS—TKHF.

RoHS10

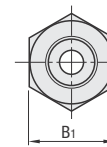


### SUS—TKHP (One end male / female)



### Special Plugs (P. 215)

SUS—TKMM  
SUS—TKMF

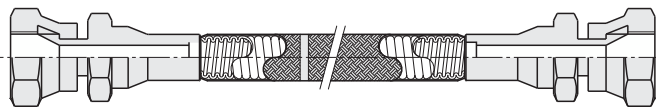


### Material

① Nipple	SUS304
② Collar	
③ Wire braid	
④ Sleeve	
⑤ Cap nut	PTFE
⑥ Hose	

Thread JIS B0202 parallel thread for tube G(PF)  
JIS B0203 tapered thread for tube R(PT)

### SUS—TKHF (Both ends female)



R(PT)	(N)	ℓ	t	B (Allen side)	Internal dia. of hose (φd)	External dia. of hose (D)	G(PF)	(N1)	ℓ1	B1 (Allen side)	Part Number Type	No.	L 10mm increments
1/8	40	9	5	14	7.4	11.3	1/8	47	7	14	SUS—TKHP (Male and female plugs)	1	200~1000
1/4	43	12	5	14	7.4	11.3	1/4	49	8	17	SUS—TKHF (Both ends female)	2	
3/8	49	13	6	19	9.5	14.5	3/8	51	16	21		3	

Part Number Type	No.	L200~240	L250~290	L300~340	L350~390	L400~440	L450~490	L500~540	L550~590	L600~640	L650~690	L700~740	L750~790	L800~840	L850~890	L900~940	L950~990	L1000
SUS—TKHP (Male and female plugs)	1																	
	2																	
	3																	
SUS—TKHF (Both ends female)	1																	
	2																	
	3																	

Quotation

Use SUS—TKHP and SUS—TKHF with care, because the cap nut shape differs from mold-cooling flexible hoses (FSHP, FSHF).

Use the special plugs (SUS—TKMM, SUS—TKMF) for SUS—TKHP and SUS—TKHF.

Plugs for high-temperature hose (FSHG, FSHGR, FSHL, FSHLR, FSHLS) cannot be used.



Order

Part Number — L  
SUS—TKHP 1 — 900



Days  
to Ship

Quotation



Price

Quotation

### Specifications

Model Number	SUS—TKHP (Male and female plugs) SUS—TKHF (Both ends female)		
R (PT)	1/8	1/4	3/8
Working pressure (MPa) [kgf/cm <sup>2</sup> ]	2.0 [20]	2.0 [20]	6.86 [70]
Destructive pressure (MPa) [kgf/cm <sup>2</sup> ]	27.44 [280]	27.44 [280]	27.44 [280]
Minimum bending radius	26	26	26
Usable temperature range (standalone use)	-30℃～+180℃		

### Features

#### Bending radius

Compared to the previous stainless steel flexible hoses (SUS—TKSP, SUS—TKSF), the flexible hose has about half the bending radius.

#### Corrosion resistance

This product is made of stainless steel and conforms to RoHS, with excellent resistance to corrosion.

#### Non-absorptive

Teflon® does not absorb moisture, so fluid does not ooze out from the pipe side.

#### Storage life

Unlike a rubber hose, secular change of Teflon® is small and its life remains unchanged under all weather conditions.

※ Teflon® is the product name for polytetrafluoroethylene resin made by the U.S. "DuPont" corporation. This product uses DuPont's genuine Teflon.

COMPONENTS FOR MOLD COOLING AND  
TEMPERATURE CONTROLLING SYSTEMS