

Note that, for some of the types shown here, order might be unable to be received by the MISUMI Malaysia, Indonesia, and/or India offices.

Extra Thin Resin Washers / Extra Thin Resin Washer Bulk Packages

Extra thin washer with excellent low friction and abrasion resistance.

Extra Thin Resin Washers- Abrasion Resistant

RoHS

SWSPS

Material: Polyslider® (Nylon Resin)
Polyslider® is a registered trademark of ASAHI POLYSLIDER COMPANY, LIMITED.

Part Number	Type	D	V	T	Unit Price
SWSPS	8	3 4 5			
	10	4 5 6			
	12	4 5 6 8		0.13	
	14	5 6 8 10		0.25	
	15	5 6 8 10 12		0.5	
	16	6 8 10 12		1.0	
	20	6 8 10 12 15 16			
	25	6 8 10 12 15 16 20		0.25	0.5

Tolerance

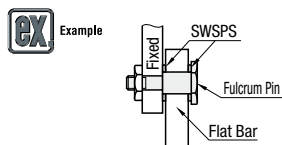
Thickness (T) Tolerance	0.13	0.25	0.5	1.0
	±0.013	±0.025	±0.05	±0.1

Comparison Table

Item	Polyslider®	Fluororesin
Abrasion Resistance	○	○
Compression Strength	○	×
Sliding Properties	○	○
Characteristics	Crush and abrasion resistant.	Low friction and not crush resistant.

Property Data

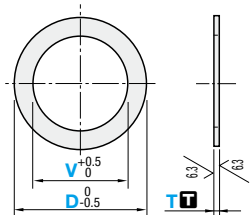
Item	Unit	Value
Tensile Strength	MPa	98
Elongation	%	60
Friction Coefficient	μ	0.16~0.4
Insulation Resistance	kV/mm	45



Extra Thin Resin Washers- Polyacetal, Fluororesin, Polycarbonate

RoHS

Type	Washer	Washer Package	Material	Color	Thickness (T) Tolerance
SWSJJ	PACK-SWSJJ		Polyacetal	White	0.1 0.2 0.3 0.5 1.0
SWSPT	PACK-SWSPT		Fluororesin	White	±0.01 ±0.02 ±0.03 ±0.05 ±0.10
SWSPP	PACK-SWSPP		Polycarbonate	Transparent	



When you need large quantities, Bulk Packages are more economical. PACK-SWS□□ contains 10 pieces.

Part Number	Type	D	V Selection	T Selection	Unit Price			
					PACK-SWSJJ	PACK-SWSPT	SWSJJ	SWSPT
PACK-SWSJJ PACK-SWSPT SWSJJ SWSPT	8	0	3 4					
	10	0	3 4 5 6					
	12	0	4 5 6 8					
	14	0	4 5 6 8 10					
	15	0	4 5 6 8 10 12					
	16	0	4 5 6 8 10 12					
	20	0	5 6 8 10 12 15 16					
	25	0	6 8 10 12 15 16 20					
	30	0	8 10 12 15 16 20 25					
	35	0	10 12 15 16 20 25 30					
40	0	10 12 15 16 20 25 30						
50	0	12 15 16 20 25 30 35 40						

*PACK-SWSJJ and SWSJJ are not available for T0.1.

Part Number	Type	D	V Selection	T Selection	Unit Price	
					PACK-SWSPP	SWSPP
PACK-SWSPP SWSPP	8	0	3 4			
	10	0	3 4 5 6			
	12	0	4 5 6 8			
	15	0	5 6 8 10			
	16	0	5 6 8 10 12			
	20	0	6 8 10 12 15 16			
	25	0	6 8 10 12 15 16			
	30	0	8 10 12 15 16 20			
	35	0	20 25 30			
	40	0	20 25 30			
50	0	30 35 40				

For package, minimum order unit is 1 pack.

Ordering Example

Part Number	V	T
PACK-SWSJJ8	3	0.5
SWSPP8	3	0.5

Resin Washer

Flanged Solid / Flanged

RoHS

Flanged Solid	Flanged	Material	Color
FWNJJ	FWHJ	Polyacetal	White
FWNJK	FWHJK	MC Nylon Standard Grade	Black
FWNJM	FWHJM	MC Nylon Standard Grade	Blue
FWNJW	FWHJW	MC Nylon Standard Grade	Ivory
FWNJD	FWHJD	MC Nylon Conductive Grade	Black
FWNJT	FWHJT	MC Nylon Conductive Grade	Black
FWNJB	FWHJB	Bakelite	Paper Base Brown
FWNJB	FWHJB	Bakelite	Dark Base Light Brown
FWNJJ	FWHJJ	Fluororesin	White
FWNJF	FWHJF	PEEK	Gray
FWNJE	FWHJE	Epoxy Glass	Green

Material Properties P.141

Flanged Solid

Part Number	D	V 0.5mm Increment	H 0.5mm Increment	T 0.5mm Increment	Unit Price																					
					FWNJJ	FWNJK	FWNJK	FWNJK	FWNJK	FWNJK	FWNJK	FWNJK	FWNJK	FWNJK												
FWNJJ	6.0-10.0 (0.5mm Increment)	2.0-8.0		3.0-10.0																						
FWNJK	10.5-20 (0.5mm Increment)	4.0-18.0	2.0-28.0	3.0-10.0																						
FWNJM	21-30 (1mm Increment)	10.0-28.0		3.0-10.0																						
FWNJW	31-40 (1mm Increment)	15.0-38.0	2.0-38.0	5.0-10.0																						
FWNJD	41-50 (1mm Increment)	20.0-48.0	2.0-48.0	10.0-20.0																						
FWNJT	51-60 (1mm Increment)	30.0-58.0		20.0-30.0																						

Machining Conditions V≤D-2 V×3≥T-H≥1 V≤2.5→T≤10 V=3.0→T≤20

Flanged

Part Number	D	H	V 0.5mm Increment (V3 or More)	T 0.5mm Increment	L 0.5mm Increment	Unit Price																					
						FWHJ	FWHJK	FWHJM	FWHJW	FWHJD	FWHJT	FWHJB	FWHJN	FWHJF	FWHJP	FWHJE											
FWHJ FWHJK FWHJM FWHJW FWHJD FWHJT FWHJB FWHJN FWHJF FWHJP FWHJE	4.0-10 (0.5mm Increment)	6.0-20 (0.5mm Increment)	0 2.0 2.6 3.0-55.0	1.0-8.0	2.0-5.5																						
	10.5-20 (0.5mm Increment)	12.5-30 (0.5mm Increment)																									
	21-30 (1mm Increment)	23-40 (1mm Increment)																									
31-40 (1mm Increment)	33-50 (1mm Increment)																										
41-50 (1mm Increment)	43-60 (1mm Increment)																										
51-60 (1mm Increment)	53-70 (1mm Increment)																										

Machining Conditions H-D≥2 D-V≥2 L-T≥1 For FWHJT, FWHJF, FWHJP and FWHJE, H≤50

Ordering Example

Part Number	D	H	V	T	L
FWHJN	D20	H30	V10.5	T2.5	L8.5

