



Miniature Linear Guides

Short Blocks, Light Preload / Slight Clearance

= For customers using industry standard products =
 frame-surrounded products are compliant with the industry standard specifications (Stainless Steel, Light Preload, High Grade Type). Select the block from this spec.

■ Features: Short Block Type of industry-standard spec. 20% more compact than standard blocks.

Industry Standard

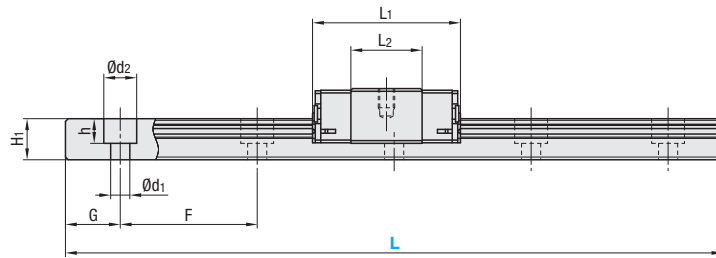
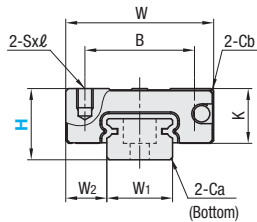


RoHS 10

- Ⓜ This Type has the same fitting dimensions as the other company products, and thus, can be substituted for them.
- Ⓜ Blocks and rails are not sold as separate items. This Type has guaranteed radial clearances and accuracies as sets of blocks and rails.

Material	Type		MX Lubrication Unit	L Dimension	Number of Blocks
	Light Preload High Grade	Slight Clearance Standard Grade			
Stainless Steel 56HRC~	SSEBS	SSEBSZ	Blank: None -MX: Provided	Selectable	1
	SSE2BS	SSE2BSZ		Configurable	2
	SSEBSL	SSEBSLZ		Selectable	1
	SSE2BSL	SSE2BSLZ		Configurable	2
Carbon Steel 58HRC~	SEBS	SEBSZ	-	Selectable	1
	SE2BS	SE2BSZ		Configurable	2
	SEBSL	SEBSLZ		Selectable	1
	SE2BSL	SE2BSLZ		Configurable	2

Heat Resistant Temperature: -20 ~ 80°C



Ⓜ For L Configurable, G dimensions differ from those shown in the table below. For details, see P531

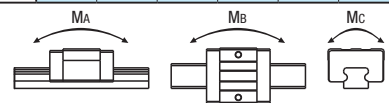
- Precautions for Use
 - Ⓜ Blocks are equipped with retainers (wire) to prevent balls from falling off. For how to handle the blocks, see P525.
 - Ⓜ Radial clearances and accuracies are not guaranteed if the blocks and rails are interchanged from the original set combinations.
 - Ⓜ Straight grooves are provided on datum planes. Be sure to match the datum lines when using.
 - Ⓜ Rails cannot be connected end to end.
 - Ⓜ The accuracy of Linear Guides is guaranteed after mounting the rail (after fastening screws on the rail and pushing it onto the datum plane).
 - Ⓜ Minor bending of the rail will be adjusted after being mounted and will not affect the performance.
- Accessory
 - Ⓜ H8 comes with cap screws (M2x6).
- Others
 - Ⓜ Filled with Lithium soap based grease (Multemp Grease PS2 by Kyodo Yushi Co., Ltd.).
 - Ⓜ For operating life calculation, see P527.
 - Ⓜ For operating life calculations, use our free calculation software from http://download.misumi.jp/mol/fa_soft.html.
 - Ⓜ The MX type is greased with a lithium complex grease (TOUGHLIX GREASE MP2, made by JXTG Nippon Oil & Energy Corporation).

Part Number	Type	MX	H	L	Block Dimension				Guide Rail Dimension									
					W	L1	B	Sxℓ	L2	K	Cb	W1	W2	H1	Ca	Counterbored Hole d1xd2xh	F	G
Stainless Steel Industry Standard Specifications SSEBS SSE2BS SSEBSL SSE2BSL	Blank: None -MX: Provided (for stainless steel only)	-	8	40~130 (55)	17	19.6	12	M2x2.5	9.6	6.5	0.3	7	5	4.7	0.3	2.4x4.2x2.3	15	5
			10	35~275 (75)	20	22.9	15	M3x3	11.9	7.8	0.3	9	5.5	5.5	0.3	3.5x6x3.5	20	7.5
			13	45~470 (95)	27	27	20	M3x3.5	13	10	0.5	12	7.5	7.5	0.5	3.5x6x4.5	25	10
			16	70~670 (110)	32	32.7	25	M3x4	17.7	12	0.5	15	8.5	9.5	0.5	3.5x6x4.5	40	15

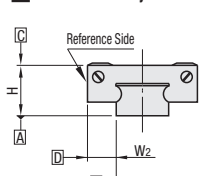
kgf~Nx0.101972

Unit: µm

H	Basic Load Rating		Allowable Static Moment		Mass		
	C (Dynamic) kN	Co (Static) kN	MA N·m	Mb N·m	Mc N·m	Block kg	Guide Rail kg/m
8	0.79	1.27	1.9	1.6	4.6	0.008	0.19
10	1.16	1.68	3.1	2.6	7.9	0.015	0.31
13	1.63	2.38	5.2	4.4	14.8	0.025	0.61
16	3.08	4.23	12.3	10.3	32.6	0.05	1.02



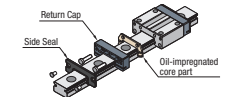
Preload and Accuracy Standards



Specifications	Light Preload, High Grade	Slight Clearance, Standard Grade
Radial Clearance	-3~0	0~+15
Height H Tolerance	±20	±20
Pair Variation of Height H	15	40
Width W2 Tolerance	±25	±25
Pair Variation of Width W2	20	40
Running Parallelism of Plane C against Plane A	See P525	
Running Parallelism of Plane D against Plane A	See P525	

Ⓜ Slight Clearance Type has clearance (Gap) between rails and blocks. If precision / rigidity is required, select Light Preload Type.

Lubrication Unit MX



■ The same block size as existing products!
 The oil-impregnated porous core part has been built into the product.

- Advantages of the Lubrication Unit MX:
 - Provides long-term maintenance-free operation.
 - Reduces maintenance costs.

H	L	Unit Price									
		Stainless Steel				Carbon Steel					
		High Grade	Standard Grade	High Grade	Standard Grade	High Grade	Standard Grade	High Grade	Standard Grade		
40											
55											
70											
85											
100											
115											
130											
135											
155											
175											
195											
215											
235											
255											
275											
45											
70											
95											
120											
145											
170											
195											
220											
245											
270											
295											
320											
345											
370											
395											
420											
445											
470											
70											
110											
150											
190											
230											
270											
310											
350											
390											
430											
470											
510											
550											
590											
630											
670											

L Dimension Configurable Type (1mm Increment)

H	Unit Price										
	Stainless Steel				Carbon Steel						
	High Grade	Standard Grade	High Grade	Standard Grade	High Grade	Standard Grade	High Grade	Standard Grade			
8											
10											
13											
16											

Ⓜ For calculation of L Dimension Configurable Type (1mm Increment), add the above amount to the unit price of the Selectable Type longer than, and closest to this L Dimension Configurable Type.



- Ordering Example
- Part Number - L
- SSE2BS10 - 275
 - SSEBN-MX10 - 275 (With Lubrication Unit)
 - SSE2BS10L - 175 (L Type Greased)
 - SSE2BS10G - 175 (G Type Greased)
- Alternative grease types available. P531



- Alterations
- Part Number - L - (MC, RLC, LLC, B3, B4)
- SSE2BSL16 - 450 - MC

Alterations	Code	Spec.												
Tapped Hole	MC	Changes the rail mounting holes from counterbored holes to tapped holes. <table border="1"> <tr><td>H</td><td>MC</td></tr> <tr><td>8</td><td>M3</td></tr> <tr><td>10</td><td>M4</td></tr> <tr><td>13</td><td>M4</td></tr> <tr><td>16</td><td>M5</td></tr> </table>	H	MC	8	M3	10	M4	13	M4	16	M5		
H	MC													
8	M3													
10	M4													
13	M4													
16	M5													
Rail End Cut	Left End Cut LLC Right End Cut RLC	Cuts rail ends. <table border="1"> <tr><td>H</td><td>L Cut</td><td>N</td></tr> <tr><td>10</td><td>2.5</td><td>5</td></tr> <tr><td>13</td><td>5</td><td>5</td></tr> <tr><td>16</td><td>10</td><td>5</td></tr> </table> <ul style="list-style-type: none"> Ⓜ Applicable to Selectable Type only. Ⓜ Overall length will be shorter by cutting. Ⓜ Not applicable to H8. Ⓜ Not applicable to L35 of H10 and L45 of H13. 	H	L Cut	N	10	2.5	5	13	5	5	16	10	5
H	L Cut	N												
10	2.5	5												
13	5	5												
16	10	5												
3-Block Specifications	B3	Add 2 blocks to 1-block product to ship as 3-block separate item. <ul style="list-style-type: none"> Ⓜ There are restrictions for the L dimension length. See "Selectable Shortest Rail Length" for details. Selection Example: SSEBS10-120-B3 												
4-Block Specifications	B4	Add 3 blocks to 1-block product to ship as 4-block separate item. <ul style="list-style-type: none"> Ⓜ There are restrictions for the L dimension length. See "Selectable Shortest Rail Length" for details. Selection Example: SSEBS16-190-B4 												

Additional Block Price (Same Price for High/Standard Grade)				Selectable Shortest Rail Length for B3/B4			
H	B3: Price Adder		B4: Price Adder		H	B3 (3-block)	B4 (4-block)
	Stainless Steel	Carbon Steel	Stainless Steel	Carbon Steel			
8					8	85	100
10					10	95	135
13					13	120	145
16					16	150	190

Options for Linear Guide

Position Retaining Parts	Block / Rail Fixing Parts
<ul style="list-style-type: none"> Ⓜ Rail Push Plates Ⓜ Linear Lock Ⓜ Block Derailment Prevention Parts Ⓜ Stopper Bolts 	<ul style="list-style-type: none"> Ⓜ Rail Push Plates Ⓜ Linear Guide Lock Units

Example

Short Block

Standard Block

Space Savings by approx. 20%!