

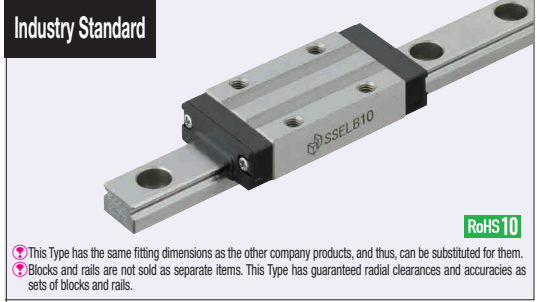


Miniature Linear Guides

Long Blocks, Light Preload

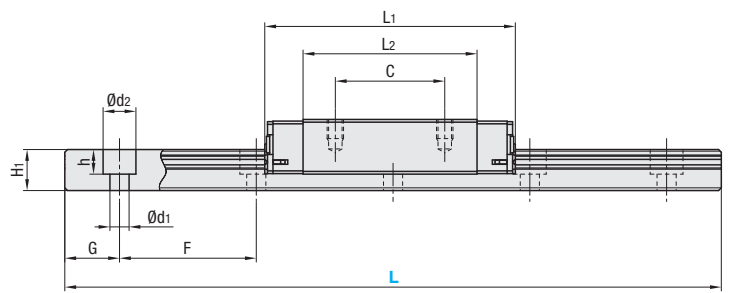
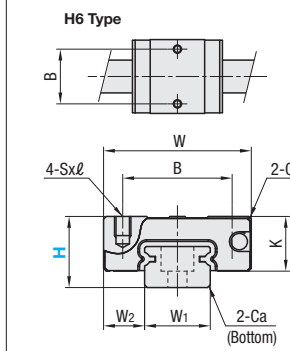
= For customers using industry standard products =
 frame-surrounded products are compliant with the industry standard specifications (Stainless Steel, Light Preload, High Grade Type). Select the block from this spec.

Similar Products Comparison Points | The industry standard Long Block Type. Select from Light Preload Types with superior precision and rigidity.



Material Hardness	Type			MX (Lubrication Unit)	L Dimension	Number of Blocks
	Light Preload High Grade	Precision Grade	Slight Clearance Standard Grade			
Stainless Steel 56HRC~	SSELB	SSELBV	SSELBZ	Blank: None -MX: Provided	Selectable	1
	SSEL2B	SSEL2BV	SSEL2BZ		2	
	SSELBL	SSELBLV	SSELBLZ		1	
	SSEL2BL	SSEL2BLV	SSEL2BLZ		2	
Carbon Steel 58HRC~	SELB	SELBV	SELBZ	Selectable	1	
	SEL2B	SEL2BV	SEL2BZ	2		
	SELBL	SELBLV	SELBLZ	1		
	SEL2BL	SEL2BLV	SEL2BLZ	2		

Heat Resistant Temperature: -20 ~ 80°C
 *HG is for stainless steel (High Grade) only.



*For L Configurable, G dimensions differ from those shown in the table below. For details, see P.531.

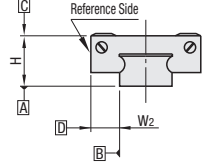
- Precautions for Use**
 - Blocks are equipped with retainers (wire) to prevent balls from falling off. For how to handle the blocks, see P525.
 - Radial clearances and accuracies are not guaranteed if the blocks and rails are interchanged from the original set combinations.
 - Straight grooves are provided on datum planes. Be sure to match the datum lines when using.
 - Rails cannot be connected end to end.
 - The accuracy of Linear Guides is guaranteed after mounting the rail (after fastening screws on the rail and pushing it onto the datum plane). Minor bending of the rail will be adjusted after being mounted and will not affect the performance.
- Accessory**
 - H6 comes with Number 0, Class 1 Phillips button head screws (M2x6).
 - H8 comes with cap screws (M2x6).
- Others**
 - Filled with Lithium soap based grease (Mullemp Grease PS2 by Kyodo Yushi Co., Ltd.).
 - For operating life calculation, see P527.
 - For operating life calculations, use our free calculation software from http://download.misumi.jp/mol/fa_soft.html.
 - The MX type is greased with a lithium complex grease (TOUGH LIX GREASE MP2, made by JXTG Nippon Oil & Energy Corporation).

Part Number Type	MX	H	L	Block Dimension							Guide Rail Dimension							
				W	L1	B	C	Sxℓ	L2	K	Cb	W1	W2	H1	Ca	Counterbored Hole d1xd2xh	F	G
Stainless Steel Industry Standard Specifications SSELB SSEL2B SSELBL SSEL2BL SELB SEL2B SELBL SEL2BL	Blank: None -MX: Provided (for stainless steel only)	6	40-100 (70)	12	21	8	-	M2x1.5	13.3	4.5	0.3	5	3.5	4	0.3	2.4x3.5x1	15	5
		8	40-130 (85)	17	32	12	13	M2x2.5	22	6.5	0.3	7	5	4.7	0.3	2.4x4.2x2.3	15	5
		10	55-275 (95)	20	40	15	16	M3x3	29	7.8	0.3	9	5.5	5.5	0.3	3.5x6x3.5	20	7.5
		13	70-470 (120)	27	45.8	20	20	M3x3.5	31.8	10	0.5	12	7.5	7.5	0.5	3.5x6x4.5	25	10
		16	110-670 (150)	32	58.3	25	25	M3x4	43.3	12	0.5	15	8.5	9.5	0.5	3.5x6x4.5	40	15
		20	160-700 (220)	40	67.7	30	30	M4x6	52.3	15	0.5	20	10	11	0.5	6x9.5x5.5	60	20

kgf=Nx0.101972

H	Basic Load Rating		Allowable Static Moment			Mass	
	C (Dynamic) kN	Co (Static) kN	MA N-m	Me N-m	Mc N-m	Block kg	Guide Rail kg/m
6	0.6	1.0	1.8	1.8	2.3	0.005	0.13
8	1.6	2.4	7.5	7.5	9.0	0.016	0.19
10	2.2	3.7	12.3	12.3	13.0	0.03	0.31
13	3.5	5.3	24.5	26.4	32.3	0.06	0.61
16	5.8	8.7	57.8	62.6	67.6	0.10	1.02
20	7.2	13.5	80.7	80.7	138.2	0.18	1.65

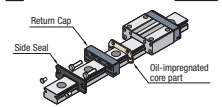
Preload and Accuracy Standards



Specifications	Light Preload, High Grade	Light Preload, Precision Grade	Slight Clearance Standard Grade
Radial Clearance	-3~0	0~+15	0~+15
Height H Tolerance	±20	±10	±20
Pair Variation of Height H	15	7	40
Width W2 Tolerance	±25	±15	±25
Pair Variation of Width W2	20	10	40
Running Parallelism of Plane A against Plane A	See P525		
Running Parallelism of Plane D against Plane A	See P525		

*Slight Clearance Type has clearance (Gap) between rails and blocks. If precision / rigidity is required, select Light Preload Type.

Lubrication Unit MX



The same block size as existing products!
 The oil-impregnated porous core part has been built into the product.

Advantages of the Lubrication Unit MX:
 Provides long-term maintenance-free operation.
 Reduces maintenance costs.

H	L	Unit Price							
		Stainless Steel				Carbon Steel			
		SSELB	SSEL2B	SSELBZ	SSEL2BZ	SELB	SEL2B	SELBZ	SEL2BZ
6	40	-	-	-	-	-	-	-	-
	55	-	-	-	-	-	-	-	-
	70	-	-	-	-	-	-	-	-
	85	-	-	-	-	-	-	-	-
	100	-	-	-	-	-	-	-	-
8	40	-	-	-	-	-	-	-	-
	55	-	-	-	-	-	-	-	-
	70	-	-	-	-	-	-	-	-
	85	-	-	-	-	-	-	-	-
	100	-	-	-	-	-	-	-	-
10	115	-	-	-	-	-	-	-	-
	130	-	-	-	-	-	-	-	-
	155	-	-	-	-	-	-	-	-
	175	-	-	-	-	-	-	-	-
	195	-	-	-	-	-	-	-	-
	215	-	-	-	-	-	-	-	-
	235	-	-	-	-	-	-	-	-
	255	-	-	-	-	-	-	-	-
	275	-	-	-	-	-	-	-	-
	70	-	-	-	-	-	-	-	-
13	95	-	-	-	-	-	-	-	-
	120	-	-	-	-	-	-	-	-
	145	-	-	-	-	-	-	-	-
	170	-	-	-	-	-	-	-	-
	195	-	-	-	-	-	-	-	-
	220	-	-	-	-	-	-	-	-
	245	-	-	-	-	-	-	-	-
	270	-	-	-	-	-	-	-	-
	295	-	-	-	-	-	-	-	-
	320	-	-	-	-	-	-	-	-
16	345	-	-	-	-	-	-	-	-
	370	-	-	-	-	-	-	-	-
	395	-	-	-	-	-	-	-	-
	420	-	-	-	-	-	-	-	-
	445	-	-	-	-	-	-	-	-
	470	-	-	-	-	-	-	-	-
	110	-	-	-	-	-	-	-	-
	150	-	-	-	-	-	-	-	-
	190	-	-	-	-	-	-	-	-
	230	-	-	-	-	-	-	-	-
20	270	-	-	-	-	-	-	-	-
	310	-	-	-	-	-	-	-	-
	350	-	-	-	-	-	-	-	-
	390	-	-	-	-	-	-	-	-
	430	-	-	-	-	-	-	-	-
	470	-	-	-	-	-	-	-	-
	510	-	-	-	-	-	-	-	-
	550	-	-	-	-	-	-	-	-
	590	-	-	-	-	-	-	-	-
	630	-	-	-	-	-	-	-	-
670	-	-	-	-	-	-	-	-	
20	160	-	-	-	-	-	-	-	-
	220	-	-	-	-	-	-	-	-
	280	-	-	-	-	-	-	-	-
	340	-	-	-	-	-	-	-	-
	400	-	-	-	-	-	-	-	-
	460	-	-	-	-	-	-	-	-
	520	-	-	-	-	-	-	-	-
	580	-	-	-	-	-	-	-	-
640	-	-	-	-	-	-	-	-	
700	-	-	-	-	-	-	-	-	

L Dimension Configurable Type (1mm Increment)

H	Unit Price			
	Stainless Steel		Carbon Steel	
	SSELBL	SSEL2BL	SELBL	SEL2BL
6	-	-	-	-
8	-	-	-	-
10	-	-	-	-
13	-	-	-	-
16	-	-	-	-
20	-	-	-	-

*For calculation of L Dimension Configurable Type (1mm Increment), add the above amount to the unit price of the Selectable Type longer than, and closest to this L Dimension Configurable Type.

Ordering Example

Part Number - L

SSELB10 - 275 (With Lubrication Unit)
 SSELB-MX10 - 275 (Low Temperature Black Chrome Plating)
 RSELB10 - 75 (L Type Greased)
 SSELB10L - 75 (L Type Greased)
 SSELB10G - 75 (G Type Greased)

Low Temperature Black Chrome Plating and various Grease types available as alternative.
 P531

Alterations

Part Number - L - (MC, RLC, LLC, WC, B3, B4)

SSEL2BL16 - 450 - MC

Alterations	Code	Spec.
Tapped Hole	MC	Changes the rail mounting holes from counterbored holes to tapped holes.
Rail End Cut:	LLC, RLC	Cuts rail ends. Ordering Code LLC
Parallel Use of 2 Rails	WC	Pair variation of Height H between 2 rails is set within 15µm. Rails are shipped in pairs. Specify the actual rail quantity (even number) to order, not "pairs". Applicable to High Grade Type only. Not applicable to low temperature chrome plated products.
3-Block Specifications	B3	Add 2 blocks to 1-block product to ship as 3-block separate item. There are restrictions for the L dimension length. See "Selectable Shortest Rail Length" for details. Selection Example: SSELB10-215-B3
4-Block Specifications	B4	Add 3 blocks to 1-block product to ship as 4-block separate item. There are restrictions for the L dimension length. See "Selectable Shortest Rail Length" for details. Selection Example: SELBZ13-220-B4

Additional Block Price (Same Price for High/Standard Grade)

H	B3: Price Adder		B4: Price Adder	
	Stainless Steel	Carbon Steel	Stainless Steel	Carbon Steel
8	-	-	-	-
10	-	-	-	-
13	-	-	-	-
16	-	-	-	-
20	-	-	-	-

*Not applicable to H6.

Selectable Shortest Rail Length for B3/B4

H	B3 (3-block)		B4 (4-block)	
	B3	B4	B3	B4
6	85	-	-	-
8	115	-	-	-
10	155	195	-	-
13	170	220	-	-
16	230	270	-	-
20	280	340	-	-

Options for Linear Guide

Position Retaining Parts

Block / Rail Fixing Parts

Rail Push Plates P607

Rail Height Adjusting Blocks P609

Block Derailment Prevention Parts

Stopper Bolts P612

Linear Lock P612

Linear Guide Lock Units P613, P614