

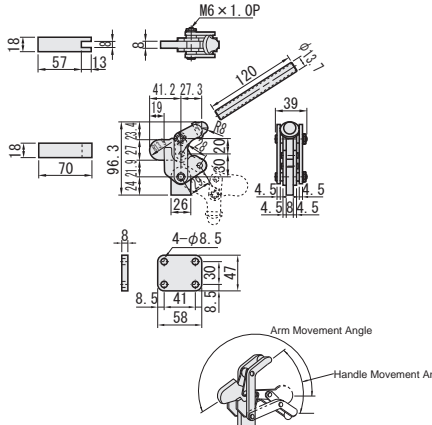
Welding Clamps

Part Number	VAR 1-1	VAR 1-2	VAR 1-3
Body Material	SS400 (With Hardened Bushing)		
Tare(g)	845	2130	4100
Suppress Pressure(N)	1960	4900	9800
Open-Close Angle of Handle	116°	120°	120°
Arm Movement Angle	187°	190°	190°
Unit Price Qty. 1~19	88.40	123.22	162.37

RoHS

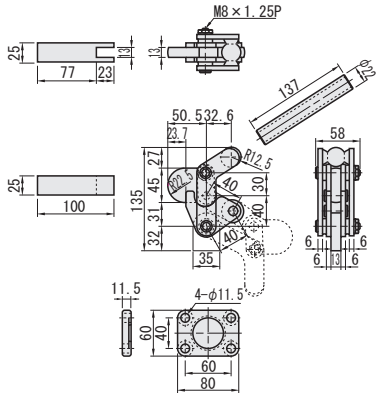
VAR 1-1

Old



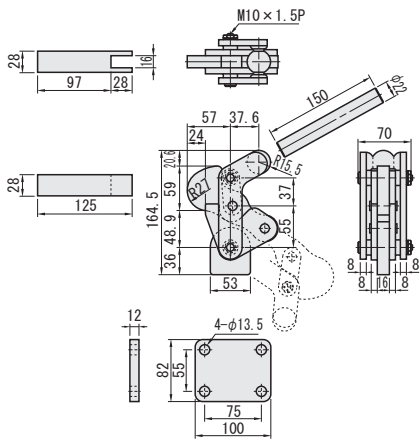
VAR 1-2

Old



VAR 1-3

Old

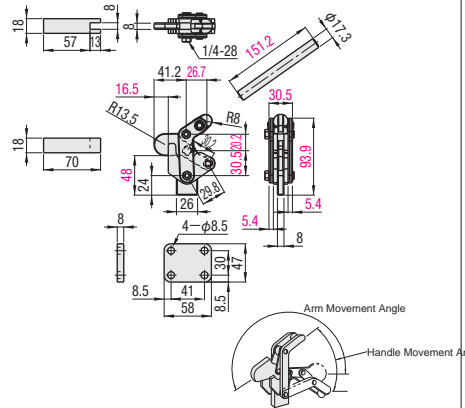


Part Number	MC09-1	MC09-2	MC09-3
Body Material	SS400 (With Hardened Bushing)		
Tare(g)	845	2130	4100
Suppress Pressure(N)	1960	4900	9800
Open-Close Angle of Handle	122°	122°	128°
Arm Movement Angle	196°	191°	197°
Unit Price Qty. 1~19	70.75	98.67	129.96

RoHS

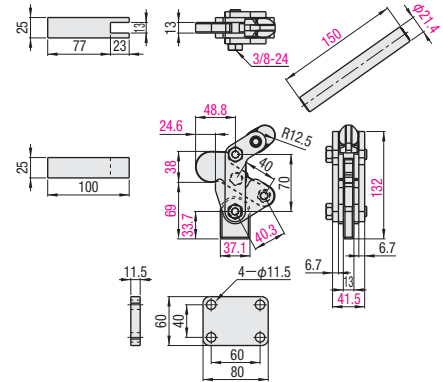
MC09-1

New



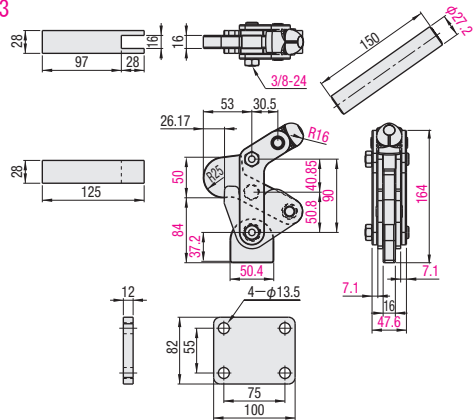
MC09-2

New



MC09-3

New



Metallic Heats for Clamps

Tip part	Bolt part	Type
M	H	S
NBR	ShoreA70	Steel
		Treated Chrome
		Stainless
		TGB
		STGB

TGB
STGB (Stainless Steel)

Old

Part Number	L	t1	t2	d	d1	Unit Price Qty. 1~9
Type	M-t	TGB	STGB			
4-13	23	8	8	12	3.37	7.06
4-32	42	2	8	8	4.01	8.02
6-37	51	12	10	16	5.29	9.31
6-87	101	10	10	16	10.59	-
8-49	67	5	13	12	6.42	11.23
8-105	123	5	13	12	11.87	-
10-59	85	6	20	16	11.55	-
12-66	100	9	25	22	13.16	-

Type	Tip part	Bolt part
M	H	S
MC□-□□	NBR	ShoreA70
MC□-□□		Steel
MC□-□□		Treated Chrome
MC□-□□		Stainless
MC□-□□		Stainless Steel

MC□-□□
(Old part number TGB)

MC□-□□ (Stainless Steel)
(Old part number STGB)

New

Part Number	M-t	L	t1	t2	d	d1	Standard Unit Price Qty. 1~19
Type	(Thread effective length)	(Length)					
MC4-15	4-15	23	8	8	12	3.37	2.73
MC4-32	4-32	42	2	8	8	4.01	3.21
MC6-37	6-37	51	12	10	16	5.29	4.33
MC6-87	6-87	101	10	10	16	10.59	8.50
MC8-45	8-45	63	5	13	12	6.42	5.13
MC8-105	8-105	123	5	13	12	11.87	9.63
MC10-59	10-59	85	6	20	16	11.55	9.31
MC12-66	12-66	100	9	25	22	13.16	10.59

Part Number	M-t	L	t1	t2	d	d1	Standard Unit Price Qty. 1~19
Type	(Thread effective length)	(Length)					
MC54-15	4-15	23	2	8	8	12	5.78
MC54-32	4-32	42	2	8	8	12	6.42
MC56-37	6-37	51	12	10	16	16	7.54
MC58-45	8-45	63	5	13	12	19	8.98

*All prices are in SS