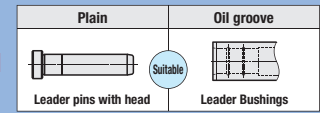


# PRECISION LEADER PINS

— HEAD · PLAIN L DIMENSION SELECTION TYPE —

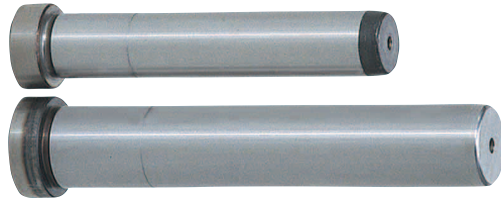


Printed in Red

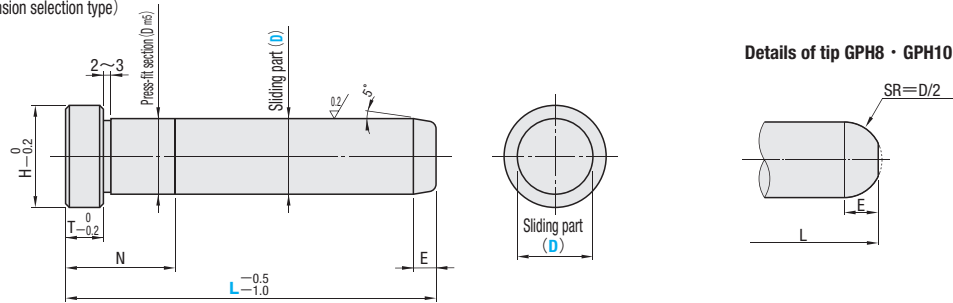


The volume discount rate is also applicable to alteration cost.  
All price & lead time are to be quoted.

RoHS



GPH (L dimension selection type)



- Recommended mold temperature for the usage of a precision leader pin and bushing is 80°C or less because of a little clearance between them.
- A center hole may be left on one or both ends.

SUJ2  
58HRC~  
(Induction hardening)



Order

Catalog No. — L  
GPH20 — 140

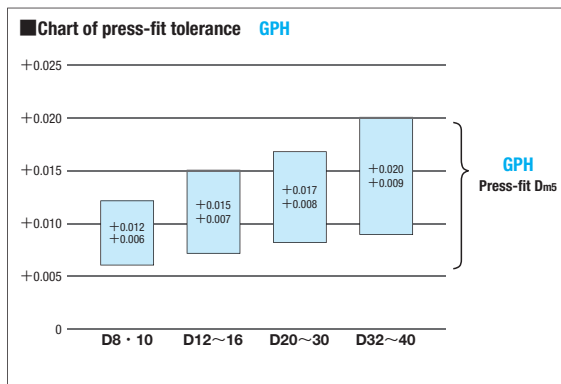


Delivery

Printed in Red  
SGP Stock  
Printed in Black  
5 Days  
For area out of Singapore please refer to P.I.

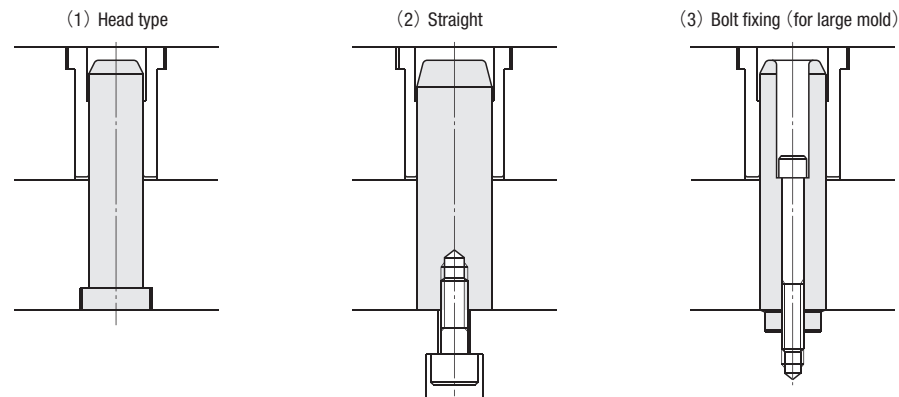
Quantity discount rate

Quantity	1~9	10~19	20~29	30~50
Rate	—	5%	10%	15%



Example

Example of mounting leader pins



Sliding part D	Press-fit section D <sub>ms</sub>	T	H	E	N	Catalog No.		L selection	U/Price 1~9	
						Type	D			
8	8	—0.015 —0.020	8	+0.012 +0.006	11	3	14	30 35 40	8	
										19
10	10	—0.020 —0.025	10	+0.015 +0.007	13	4	14	10	30 35 40	
										19
12	12	—0.020 —0.025	12	+0.015 +0.007	17	5	14	12	30 35 40 45	
										19
13	13	—0.020 —0.025	13	+0.015 +0.007	18	5	14	13	50 60 70	
										19
16	16	—0.025 —0.030	16	+0.017 +0.008	21	5	14	16	50 60 70	
										19
20	20	—0.025 —0.030	20	+0.017 +0.008	25	5	14	20	120 140 150 160	
										19
25	25	—0.025 —0.030	25	+0.017 +0.008	30	8	14	25	70 80	
										19
30	30	—0.030 —0.035	30	+0.020 +0.009	35	8	14	30	120 130 140 150	
										19
35	35	—0.030 —0.035	35	+0.020 +0.009	40	8	14	35	170 180 190	
										19
40	40	—0.030 —0.040	40	+0.020 +0.009	45	8	14	40	120 130 140 150	
										19
50	50	—0.030 —0.040	50	+0.020 +0.009	55	8	14	50	180 190 200 210 220	
										19
60	60	—0.030 —0.050	60	+0.024 +0.011	65	8	14	60	240 250 260	
										19
60	60	—0.030 —0.050	60	+0.024 +0.011	65	8	14	60	290 300	
										19
60	60	—0.030 —0.050	60	+0.024 +0.011	65	8	14	60	380 400 420	
										19

GPH

Quotation

You can order products of the same size by designating the press-fit part length of the precision grade pin GPHL.