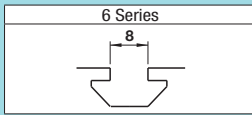


Post-Assembly Insertion Easy Brackets / Plate Brackets

For 6 Series (Slot Width 8mm) Aluminum Extrusions



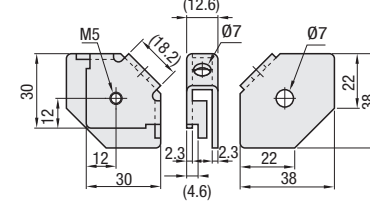
Features: 2 aluminum extrusions can be easily connected with only 1 tightening screw. Brackets can be mounted on the extrusion slots after assembly.

Post-Assembly Insertion Easy Brackets

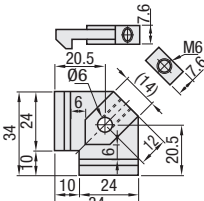
| Components | Material | Surface Treatment |
|-----------------------------|-----------------|--------------------|
| ① Joint Plate | SPCC | |
| ② Joint Brackets | S45C Equivalent | Trivalent Chromate |
| ③ Hex Socket Head Cap Screw | SCM435 | |

HABL6

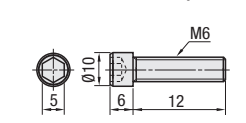
① Joint Plate



② Joint Brackets



③ Hex Socket Head Cap Screw



⚠ Overtightening may cause deformation of joint plates. (Reference Tightening Torque 10.5N · m)

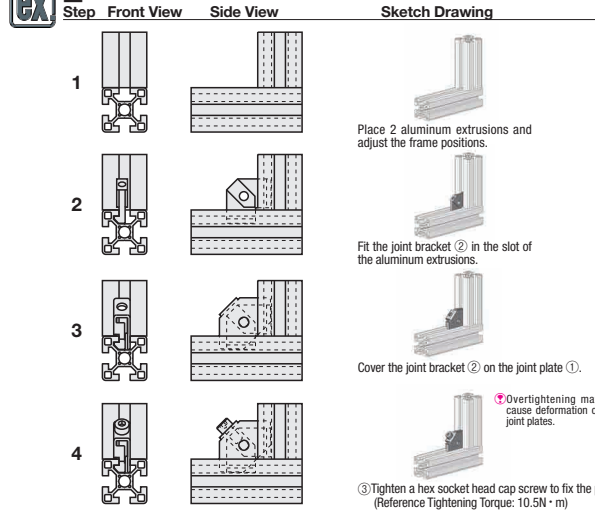


RoHS10

| Part Number Type | Mass (g) | Included Screw | Quantity | Allowable Load (N) | Unit Price | Volume Discount Rate |
|------------------|----------|---------------------------------|----------|--------------------|------------|----------------------|
| HABL6 | 90 | Hex Socket Head Cap Screw M6x12 | 1 | 600 | 1-99 pc(s) | 100-200 |

Ordering Example Part Number **HABL6**

Connection Method



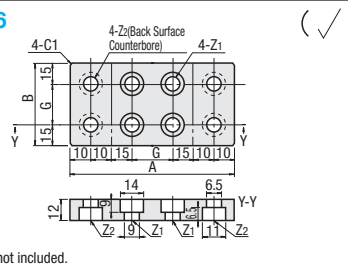
Features: Direct screw-on brackets to use on tapped extrusions.

Plate Brackets

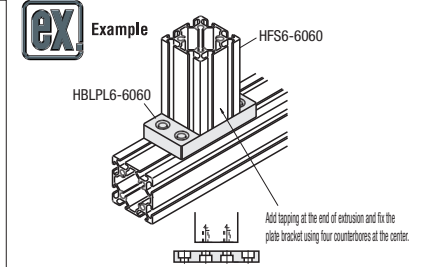
HBLPL6



Material: SS400
Surface Treatment: Electroless Nickel Plating



* Screws are not included.



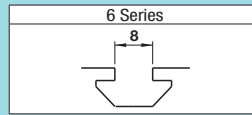
| Part Number | Extrusion | A | B | Z1 | Z2 | G | Mass (g) | Unit Price | Volume Discount Rate |
|-------------|-----------|-----|----|----|----|----|----------|------------|----------------------|
| HBLPL6 | 5050 | 90 | 50 | M8 | M6 | 20 | 350 | 1-9 pc(s) | 10-50 |
| | 6060 | 100 | 60 | | | 30 | 470 | | |

Ordering Example Part Number - Extrusion **HBLPL6 - 5050**

| Alteration | Code | Spec. |
|--------------|------|--|
| Through Hole | DC | Adds a through hole. DC=Hole Dia. 1 mm Increment 10 ≤ DC ≤ 20 Ordering Code DC12 |

Thin Brackets / Block Brackets

For 6 Series (Slot Width 8mm) Aluminum Extrusions



Features: Thin Extruded Brackets with space saving design.

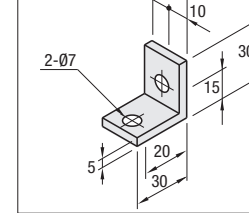
Thin Brackets



| Type | Material | Surface Treatment |
|-----------|------------|-------------------|
| HBLSS6 | | Anodize |
| HBLSSB6 | A6N01SS-T5 | Black Anodize |
| HBLSD6-50 | | Anodize |

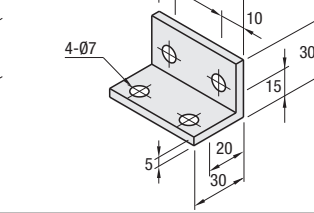
HBLSS6

(Black Anodize)



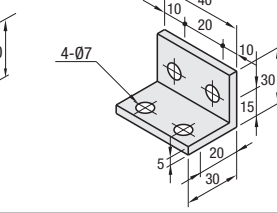
HBLSD6

(Black Anodize)



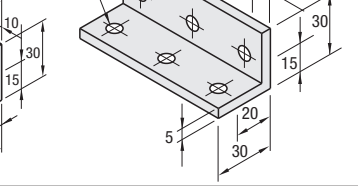
HBLSD6-50

(For 50 Sq.)



HBLST6

(For 50 Sq.)



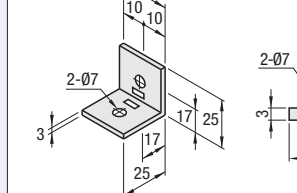
| Part Number Type | Mass (g) | Applicable Screw, T Nut | Quantity | Allowable Load (N) | Unit Price | Volume Discount Rate |
|--------------------------|----------|-------------------------|----------|--------------------|------------|----------------------|
| HBLSS6 | 14 | CBM6-12 | 2 | 980 | 1-99 pc(s) | 100-200 |
| HBLSSB6* (Black Anodize) | 35 | CBM6-12 | 4 | 1568 | | |
| HBLSD6 | 28 | HNTT6-6 | 4 | 1568 | | |
| HBLSD6-50 | 56 | HNTT6-6 | 6 | 2352 | | |

* For repairing black anodizing, refer to P846.

Features: Thin Brackets with tabs to fit in slots of extrusions and stop rotating when tightening.

Thin Stainless Steel Tabbed Brackets

HBLSP6



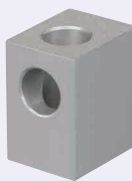
Material: SUS304

| Part Number Type | Mass (g) | Applicable Screw, T Nut | Quantity | Allowable Load (N) | Unit Price | Volume Discount Rate |
|------------------|----------|-------------------------|----------|--------------------|------------|----------------------|
| HBLSP6 | 33 | CBM6-12 | 2 | 980 | 1-99 pc(s) | 100-200 |

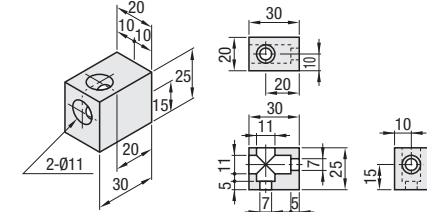
Features: The brackets do not protrude from extrusion widths when used to cross connect extrusions. Space-saving design compared to Tabbed Reversal Brackets.

Block Brackets

HBLBL6



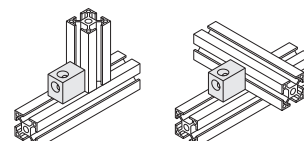
Material: A6N01SS-T5
Surface Treatment: Anodize



| Part Number Type | Mass (g) | Applicable Screws and Nuts Set | Quantity | Allowable Load (N) | Unit Price | Volume Discount Rate |
|------------------|----------|--------------------------------|----------|--------------------|------------|----------------------|
| HBLBL6 | 31 | CBM6-12 | 2 | 980 | 1-99 pc(s) | 100-200 |

Ordering Example Part Number **HBLBL6**

Example



| Alterations | Code | Spec. | Applicable Bracket |
|--------------------------------|--|--|--------------------|
| Alterations | SET | (SET, SST, SEU, SSU, SEP, SSP) | |
| Applicable Screws and Nuts Set | SST (Stainless Steel) | Applicable screws and nuts for fixing the brackets on extrusions come in a set. (Adds to the bracket price.) (Ex.) When HBLSS6 is specified: | HBLSS6 |
| | SEU (Pre-Assembly Insertion Spring Nuts) | | HBLSSB6 |
| | SSU (Pre-Assembly Insertion Spring Nuts) | | HBLSD6 |
| | SEP (Pre-Assembly Insertion Spring Nuts) | | HBLSDB6 |
| | SSP (Pre-Assembly Insertion Spring Nuts) | | HBLST6 |
| | | | HBLSD6-50 |
| | | | HBLSP6 |
| | | HBLBL6 | |

⚠ Screws for black anodized brackets are HCBMTB (Trivalent Chromate Black) on P751.
⚠ Included Screw is not RoHS compliant when -SET, -SEU or -SEP other than black anodized brackets is specified.