

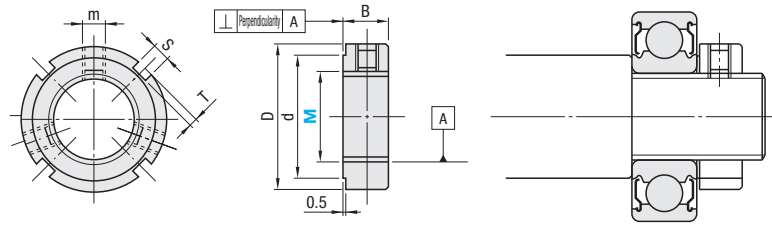
# Precision Lock Nuts / Hook Spanners for Bearing Lock Nuts



CAD Data Folder Name: 13\_Bearings\_with\_Holder

Ordering Example Part Number **PLNY20**

## Precision Lock Nuts



Type	Perpendicularity
PLNY(Standard)	[⊥.]0.005[A]
PLN(High-Grade)	[⊥.]0.002[A]

Component	Material	Hardness	Surface Treatment
Main Body	SCM440	28-32HRC	Black Oxide
Set Screw	SCM435	35-40HRC	-
Locking Metal (L)	Phosphor Bronze	-	-

\* Locking metal is the metal at the tip portion of set screw.

Screw Accuracy ISO Class 4H

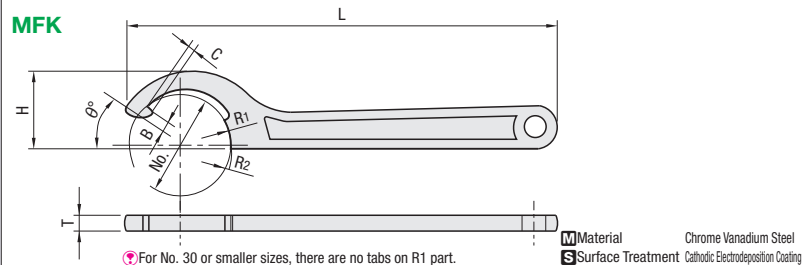
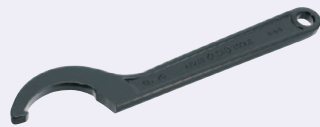
Part Number Type	M	MxPitch (Fine)		D	d	B	S	T	m	Perpendicularity of End Face (Max.)	Max. Tightening Torque (N·m) Set Screw	Days to Ship	
		PLNY	PLN										
(Standard) PLNY	8	8x0.75	16	11	8	3	2	2xM4	•PLNY 0.005	3.5	4.5	Stock	Stock
	10	10x1.0	18	13									
	12	12x1.0	20	16									
	15	15x1.0	25	21									
	17	17x1.0	28	23									
	20	20x1.0	32	27									
(High-Grade) PLN	25	25x1.5	38	33	12	5	3xM6	•PLN 0.002	8	8	8	3 Days	Stock
	30	30x1.5	45	40									
	35	35x1.5	52	47									
	40	40x1.5	58	52									
	45	45x1.5	65	59									
	50	50x1.5	70	64									
	55	55x2.0	75	68	16	7	3xM8			18	18	Stock	3 Days
	60	60x2.0	80	73									

Stock lineup may vary by country. Stock: Same day shipping available upon request. Order by THA: 16:00, SGP: 12:00, MYS: 15:00 P.75

Order Quantity	Standard Service	Non-Standard Service
	Regular Quantity	Large Quantity
1-50	Standard	51-
Days to ship	Standard	To be quoted

Ordering Example Part Number **MFK20**

## Hook Spanners for Bearing Lock Nuts



Material: Chrome Vanadium Steel  
Surface Treatment: Cathodic Electrodeposition Coating

\*For No. 30 or smaller sizes, there are no tabs on R1 part.

Part Number Type	No.	R1	R2	B	C	θ	T	H	L	Shaft Dia.	Round Nut Bearing Nut
20	10	11									
25	12.5	14									
30	15	16									
34	17	19	2.5	2.5	35°	6	28	160	ø34-ø38	M25	
45	22.5	24									
52	26	27.5									
58	29	32.5									
65	32.5	35	3.5	3		8.5	46	232	ø58-ø65	M40-M45	
70	35	37.5									

Days to Ship: **3** Days\*  
 Color Part Number: **3** Days\*  
 Example:

\* for orders placed by THA: 12:30, SGP&MYS: 13:30 P.75  
 \* Same day shipping available upon request. Order by THA: 16:00, SGP: 12:00, MYS: 15:00 P.75

Order Quantity	Standard Service	Non-Standard Service
	Regular Quantity	Large Quantity
1-50	Standard	52-
Days to ship	Standard	To be quoted

# Bearing Lock Nuts

-Square / Hexagon-



CAD Data Folder Name: 13\_Bearings\_with\_Holder

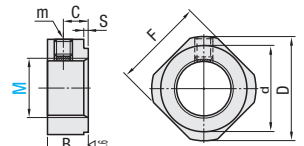
Ordering Example Part Number (Type•M) **BNR12**

## Square Type



Type	Material	Hardness	Surface Treatment	Accessory
Coarse: BNG, Fine: BNR	SS400	-	Black Oxide	Thread Protector (Copper Alloy) Set Screw (SCM435)
Coarse: BNGS, Fine: BNRS	SUS304	-	-	Thread Protector (Copper Alloy) Set Screw (SUS304)

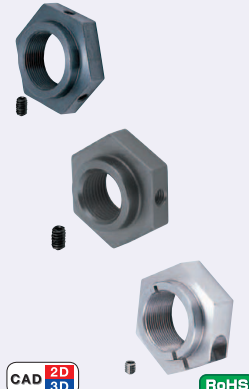
6.3 / (1.5)



Tighten the nut after inserting the Thread Protector.  
 For Thread Protector Specifications, refer to P.1616

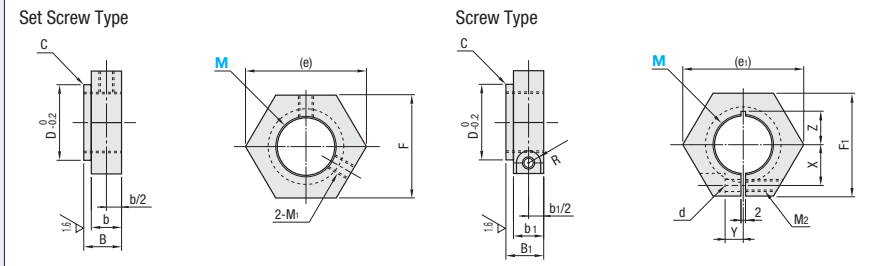
Part Number Type	M	MxPitch		D	d	F	B	C	S	m			
		(Coarse)	(Fine)										
(Coarse) BNG, (Fine) BNR, (Coarse) BNGS, (Fine) BNRS	4	M4x0.7	M4x0.5	11.5	5	10	5.5	3	0.5	M3 (With Thread Protector)			
	5	M5x0.8	M5x0.5	13.5	9	11							
	6	M6x1.0	M6x0.75	14.5	10	12							
		8	M8x1.25	M8x1.0	17	13	14	6.5	4	1	M4 (With Thread Protector)		
		10	M10x1.5	M10x1.0	20	16	17						
			12	M12x1.75	M12x1.0	22	17	19	8	5			
			15	-	M15x1.0	25	21	22					
				17	-	M17x1.0	25	21	22	10	6		
				20	M20x2.5	M20x1.0	35	26	30				
					25	-	M25x1.5	43	33	35	15	10	2
30					M30x3.5	M30x1.5	48	39	40				

## Hex Type



Type	Coarse	Fine	Material	Hardness	Surface Treatment	Accessory
Set Screw	BNCM	BNSC	SS400	-	Black Oxide	Thread Protector (Copper Alloy) Set Screw (SCM435)
Screw Type	BNBMS	BNBS	SUS303	-	-	Thread Protector (Copper Alloy) Set Screw (SUS304)
Screw Type	BNBMS	BNBS	SS400	-	Black Oxide	Hex Socket Screw (SCM435)
Screw Type	BNBMS	BNBS	SUS303	-	-	Hex Socket Screw (SUS304)

6.3 / (1.5)



Part Number Type	M	MxPitch		D	C	Set Screw					Screw Type													
		Coarse	Fine			(e)	F	B	b	M1	(e1)	F1	B1	b1	M2	X	Y	Z	d	R				
(Coarse Set Screw) BNCM, (Fine Set Screw) BNCS	5	M5x0.8	M5x0.5	9	0.2	19.6	17	9	5	M3	-	-	-	-	-	-	-	-	-	-				
	6	M6x1.0	M6x0.75	10							27.7	24	13	9	M4	7	4	7 (8.5)	4.5	3.75				
(Coarse Set Screw) BNCM, (Fine Set Screw) BNCS	8	M8x1.25	M8x1.0	13		0.2	21.9	19	10	6	M4	31.2	27	13	9	M4	9	4	7 (10)	4.5	3.75			
	10	M10x1.5	M10x1.0	16								34.6	30	16	12	M5	9.5	4.5	9 (11)	5.5	4.5			
(Coarse Set Screw) BNCM, (Fine Set Screw) BNCS	12	M12x1.75	M12x1.0	17			0.2	27.7	24	11	6	M4	41.6	36	19	14	M6	13	5	9.5 (11)	7	5.5		
	15	-	M15x1.0	21									47.3	41	19	14	M6	15	6.5	12 (15)	7	5.5		
(Coarse Set Screw) BNCM, (Fine Set Screw) BNCS	20	M20x2.5	M20x1.0	26				0.2	37.0	32	11	6	M5	53.1	46	20	14	M6	17	7.5	15	7	5.5	
	25	-	M25x1.5	33										57.7	50	20	14	M6	20	8.5	18	7	5.5	
(Coarse Set Screw) BNCM, (Fine Set Screw) BNCS	30	M30x3.5	M30x1.5	39					0.2	47.3	41	13	8	M5	57.7	50	20	14	M6	20	8.5	18	7	5.5
	35	M35x4.5	M35x1.5	45											57.7	50	20	14	M6	20	8.5	18	7	5.5

End Face M5 and M6 are available for Set Screw only. Z dimensions in ( ) are for Stainless Steel Type.

Days to Ship: **3** Days  
 Stock: **3** Days  
 Order by THA: 16:00, SGP: 12:00, MYS: 15:00 P.75

Order Quantity	Standard Service	Non-Standard Service
	Regular Quantity	Large Quantity
1-200	Standard	201-
Days to ship	Standard	To be quoted